

## Technical Information

September 2017

Supersedes issue 08\_120806e-03 of April 2013

10\_120806e-01/Page 1 of 4

Last change WF-No. 12272

® = Registered trademark of BASF  
in many countries.

# Librel® RMX 26

**A multi-micronutrient fertilizer used to correct multiple micronutrient deficiencies in crops.**

## Product information

### Product type

Mixture of micronutrients and secondary nutrients.

### Description

Ethylenediamine tetraacetate (EDTA) chelates of iron, copper, manganese and zinc as their sodium or disodium salts, also inorganic salts of boron, molybdenum and magnesium.

### PRD-No.\*

30569830

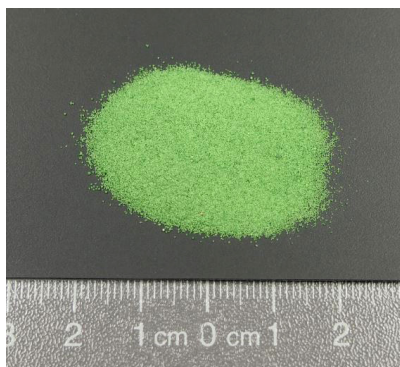
\* BASF's commercial product numbers.

### Intended use

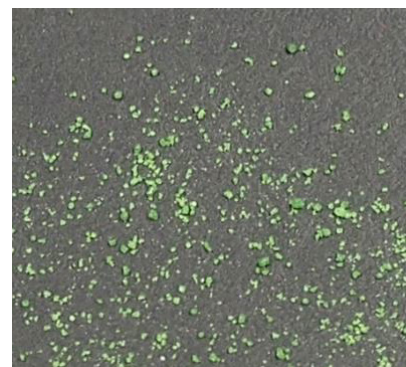
To correct multiple micronutrient deficiencies in most agricultural, horticultural and ornamental crops.

### Appearance

Librel® RMX 26 is a green spray agglomerated microgranule.



Original Size



Enlarged Image

## Handling and Storage

### Handling

- Librel® RMX 26 should be stored indoors in a dry place.
- Care must be taken to exclude moisture. Drums/bags/boxes must be tightly resealed each time they are opened.
- Big bags are not to be stacked during storage in order to prevent lumping/agglomeration due to weight compression.
- Please refer to the latest Safety Data Sheet for detailed information on product safety.

### Materials

Containers made of the following materials are appropriate for the storage of Librel® RMX 26:

- High density polyethylene (HDPE)
- Low density polyethylene (LDPE)
- Polypropylene (PP)

### Shelf life

Librel® RMX 26 has a shelf life of at least four years in its original packaging, provided it is stored correctly and drums/bags are kept tightly sealed.

### Transport precautions

No special precautions are necessary for transport by air, sea, rail or road.

### Harmonised tariff no.

3105 9099

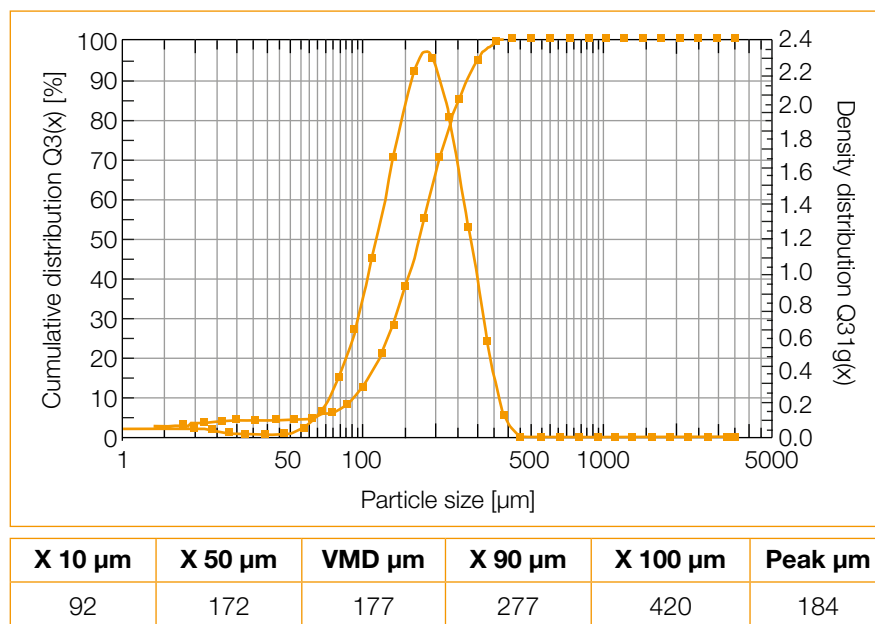
## Properties

Some physical properties are listed in the table below. These are typical values only and not all of them are monitored on a regular basis. They are correct at the time of publication and do not necessarily form part of the product specification. A detailed product specification is available on request or via BASF's WorldAccount: <https://worldaccount.basf.com> (registered access).

Librel® RMX 26	Unit	Value
Physical form (20 °C)		microgranule
Boron (as B) (BASF method 6602 & 6616, ICP-OES)	%	approx 0.5
Copper (as Cu) (BASF method 6602 & 6616, ICP-OES)	%	approx 1.5
Iron (as Fe) (BASF method 6602 & 6616, ICP-OES)	%	approx 4.0
Magnesium (as Mg) (BASF method 6602 & 6622, ICP-OES)	%	approx 2.0
Manganese (as Mn) (BASF method 6602 & 6616, ICP-OES)	%	approx 4.0
Molybdenum (as Mo) (BASF method 6602 & 6616, ICP-OES)	%	approx 0.1
Zinc (as Zn) (BASF method 6602 & 6616, ICP-OES)	%	approx 1.5
Dry weight (BASF method 6401, 110 °C)	%	approx. 95
Bulk density (BASF method 6404)	g/l	approx. 900
Solubility (BASF method 6431 in water @ 20 °C)	g/l	approx. 160
pH value (BASF method 6402, 2% in water)		approx. 6.0

## Particle size distribution

The following graph shows the particle size distribution curve for Librel® RMX 26, using Sympatec Helos H1594 Gradis System with an R7 lens:



## Directions for use

### General information

Librel® RMX 26 gives best results when crops have adequate supplies of water and major nutrients and are not under stress for any other reason. Conditions that are responsible for one particular deficiency can also induce deficiencies of other micronutrients. Always ensure that deficiencies are confirmed before treatment is carried out.

Rates of use and method of application depend on local practices, crop, degree of deficiency, etc.

### Mixing with water

Simply add the powder, slowly, to water while it is being agitated, do not pre-mix. Continue agitation for a short while to ensure the product is completely dissolved.

### Compatibility

Librel® RMX 26 is compatible with all other Librel® chelates and many crop care chemicals. It is also fully compatible with solutions containing soluble phosphates such as liquid feeds and foliar fertilizers.

### Statutory caution

To be used only where there is a recognized need. Do not exceed the appropriate dose rate.

## Safety

We are not aware of any ill effect that can result from using Librel® RMX 26 for the purpose for which it is intended and from processing it in accordance with current practices.

According to the experience that we have gained over many years and other information at our disposal, Librel® RMX 26 does not exert harmful effects on health, provided it is used properly, due attention is given to the precautions necessary for handling chemicals, and the information and advice given in our Safety Data Sheets are observed.

### Labelling

Please consult the current Safety Data Sheets for information on the classification and labelling of our products and other information relevant to safety.

### Disclaimer

This document, or any answers or information provided herein by BASF, does not constitute a legally binding obligation of BASF. While the descriptions, designs, data and information contained herein are presented in good faith and believed to be accurate, it is provided for your guidance only. Because many factors may affect processing or application/use, we recommend that you make tests to determine the suitability of a product for your particular purpose prior to use. It does not relieve our customers from the obligation to perform a full inspection of the products upon delivery or any other obligation. NO WARRANTIES OF ANY KIND, EITHER EXPRESS OR IMPLIED, INCLUDING WARRANTIES OF MERCHANTABILITY OR FITNESS FOR A PARTICULAR PURPOSE, ARE MADE REGARDING PRODUCTS DESCRIBED OR DESIGNS, DATA OR INFORMATION SET FORTH, OR THAT THE PRODUCTS, DESIGNS, DATA OR INFORMATION MAY BE USED WITHOUT INFRINGING THE INTELLECTUAL PROPERTY RIGHTS OF OTHERS. IN NO CASE SHALL THE DESCRIPTIONS, INFORMATION, DATA OR DESIGNS PROVIDED BE CONSIDERED A PART OF OUR TERMS AND CONDITIONS OF SALE.

August 2017